

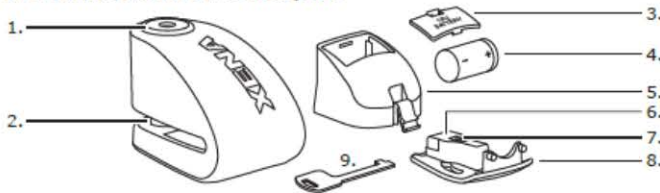
Introduction

Thank you for choosing a XENA disc-lock alarm: the world's strongest, smartest, loudest motorcycle security solution. Please read this booklet carefully.

For more information about this and other XENA locks, accessories and product news, please visit www.xenasecurity.com

Questions or comments about your XENA product?
 Email us at info@xenasecurity.com

A. XX series alarmed disc-lock parts



- 1. Lock barrel 2. Locking pin 3. Battery cover 4. Battery
- 5. Alarm module 6. Reflector 7. Spring-loaded catch 8. Module cover
- 9. Key tool (with key code & serial number)

Quick start guide

Your XENA XX Series disc-lock alarm comes with a CR2 long-life lithium battery included. Please install battery before use.

Locking your motorcycle

- Insert key in lock and rotate clockwise. Lock barrel will spring open.
- Locate hole in front brake-disc sufficient to allow locking pin to pass through.
- Slide lock on to disc and depress key barrel to insert locking pin.
- Double-locking XX10 and XX14: turn key counter-clockwise to lock.
- Pushdown XX6: depress barrel until it clicks into place.

Fitting your XENA to your motorcycle's brake disc

- 1. Brake disc thickness: less than 7mm (1/4")
- 2. Locking pin size:
 XX6 6mm (1/4")
 XX10 10mm (3/8")
 XX14 14mm (1/2")
- 3. Distance from locking pin to back of disc slot*:
 XX6 37-42mm (1 7/16"-1 5/8")
 XX10 46mm (1 7/8")
 XX14 44mm (1 3/4")



! Important: the locking pin can pass through ANY hole on disc (dark areas on diagram).

Arming the alarm

- There is no on-off switch. The unit automatically senses the presence of your brake disc.
- Important: Ensure that Reflector (A6) is covered by brake disc.
- Your XENA alarmed disc-lock is self-arming. The alarm sensors will become active 5 seconds after being locked on your brake-disc. The alarm will beep once to confirm that is armed.
- 10 seconds after the arming beep, shock & motion sensors work independently to determine if your bike is being attacked.

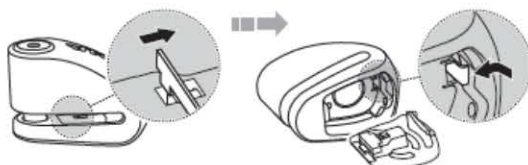
! WARNING: XENA 120dB alarms are extremely loud!
 Avoid close proximity to unprotected ears.

Changing the battery (fig.B & fig.C)

- Locate spring-loaded catch inside disc slot (fig.B).
- Using end of key tool, depress catch; release and remove lid.
- Locate clear plastic tab on module and lift to remove from lock body.
- Remove battery door (marked "CR2 BATTERY").
- Remove used battery and discard responsibly*.
- Ensure + and - contacts are properly aligned
- Insert fresh CR2 battery.
- Carefully replace module in lock body and reattach module cover.
- The key tool comes in handy to depress the spring-loaded catch.

NOTE: When module is removed from the lock body, alarm will activate. To avoid this, insert module into lock body and replace lid immediately after inserting battery.

B. To open lid and remove module



*Lithium batteries are best disposed of as a non-hazardous waste when fully or mostly discharged. DO NOT INCINERATE or subject battery cells to temperatures in excess of 212°F.

C. To replace the lid



Battery life

- Batteries should last 6 to 8 months with normal use. Frequent triggering or extreme temperatures can shorten battery life.

Keys

- Each XX Series lock comes with three keys and a flat key-tool etched with a unique code number (ie, HAB123456) and serial number (ie, 1234567890) for ordering replacement keys. Make a note of your key code and store safely. We encourage you to register your lock at www.xenasecurity.com

Register your XENA lock

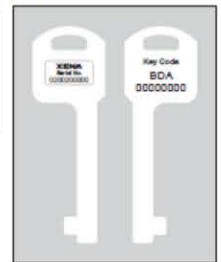
On the key-shaped metal tool provided (fig.D), you'll find your lock's two unique ID numbers:

- 1. Serial number, and
- 2. Key code.

You'll need to input both when registering at www.xenasecurity.com



D.



Caring for your lock

- Use a dry cloth to keep the LED reflector plate inside the disc-slot clean and free of dirt, dust and grease. An obstructed reflector plate can affect performance and may cause the lock to arm when not on the brake disc.
- We recommend applying a lock lubricant to the lock barrel every six months.

If alarm is damaged

- The alarm module is removable. Replacement modules are available from authorised XENA dealers or by emailing us directly at info@xenasecurity.com

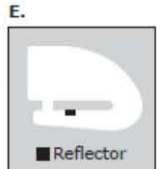
NOTE: the lock remains effective with or without the alarm system.

Transporting your disc-lock

- Ideally you should carry your XENA underneath the seat of your bike.
- CAUTION: Do not carry your XENA in or attach it to your clothing, as this may contribute to injury in the event of an accident.

Troubleshooting

- Alarm not arming: Check battery, ensure reflector (fig.E) is obstructed by motorcycle disc. Confirm sensors are active (see below).
- Constant clicking or low beeping sound: replace batteries.
- Alarm too sensitive: Place at 6 o'clock on disk.
- Alarm not sensitive enough: Place at 12 o'clock to 3 o'clock on disc.
- Alarm won't disarm: Clean sensor and reflector.



! Important:

How to "Wake Up" your XENA disc-lock alarm

- To avoid draining the battery when not in use, your XENA disc-lock alarm has a dormant power mode. Usually metal-on-metal contact from locking the lock onto your brake-disc is sufficient and the unit will arm normally.
- It may be necessary to wake up the arming sensor by firmly locking and unlocking the key barrel once or twice.

*For more detailed troubleshooting visit www.xenasecurity.com

XX series accessories

- XXA Cable and Adaptor Set
- XENA Ground Anchor
- XBP4 Replacement Battery Pack
- XLP1 Lock Pouch

Customer care

Email us at: info@xenasecurity.com

Don't forget to register your XENA lock at www.xenasecurity.com

Disclaimer:

Our products are sold as security enhancements, and are not a substitute for the end-user's duties of normal care and attention. As such, XENA Security accepts no responsibility or liability for any direct or consequential loss, damage or injury arising or resulting from the use or misuse of our products howsoever arising, save that we will always replace any product found to be defective within the warranty period.